

2

PMP Planet
Multimedia Publishers
The Ultimate Resource

Be Future Ready
IT Planet
PRESENTS

Based on the suggested skills under
National
Education
Policy
2020

SourceC<>de

Artificial Intelligence

Animated Life Skills

Coding

Computational Thinking

Experiential Learning

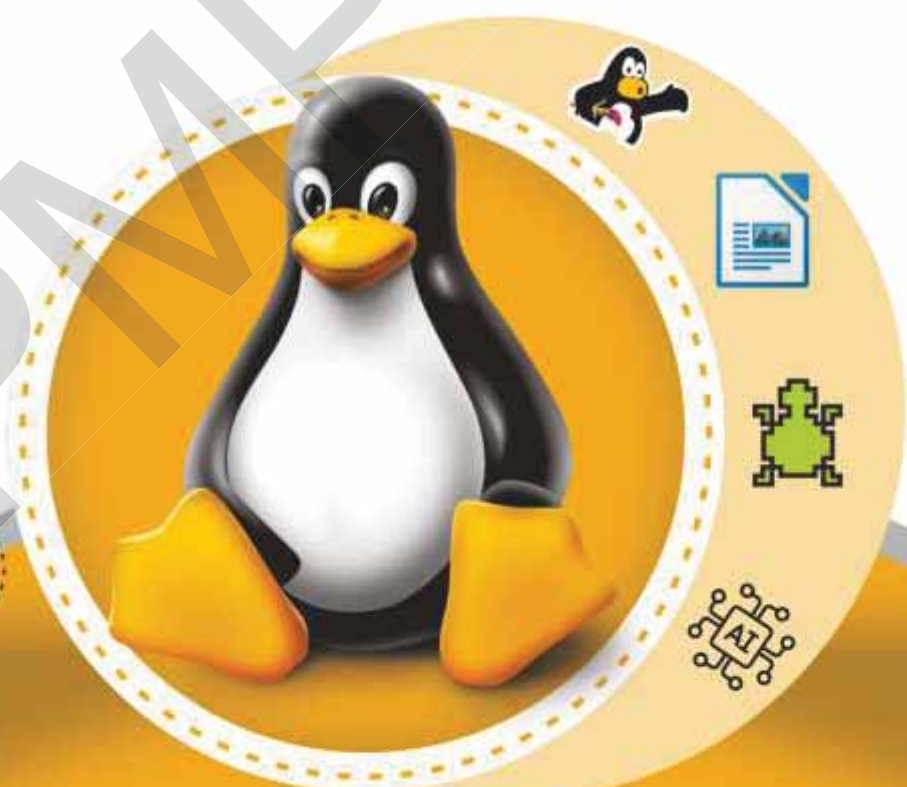
Multidisciplinary Approach

Subject Integration

Art Integration

Skill Formation

Linked with SDGs



Ubuntu 22.04
WITH LIBREOFFICE 7.3

WORKSHEET

Ch-1

Computer At Various Places

A. Choose the appropriate options:

- computers are very big and powerful.
a. Desktop b. Laptop c. Super
- Computers are used in bank for:
a. Withdrawing money from an ATM b. Maintaining accounts of the customers
c. Keeping record of money d. All of these
- Computers are small and are placed on a desk.
a. Desktop b. Super c. Laptop
- are preparing question Papers on computer.
a. Teachers b. Doctors c. Engineers

B. Fill in the blanks:

- can store huge amount of information.
- Laptop can work on as well as main power supply.
- is an electronic device.
- Computer gives us result after processing

C. Write T for the true statement and F for the false one:

- Desktop computers are used for weather forecasting.
- Laptop is a small, light weight and portable computer.
- The size of a Smartphone is smaller than a Tablet PC.
- We can diagnose diseases with the help of a computer.

D. Answer the following questions:

- What are the features of a computer?
- What is the use of computers in Hospitals?
- For what purpose you use computers in Schools?

E. Differentiate Between:

1. Desktop Computer

.....
.....
.....

Laptop Computer

.....
.....
.....

2. Tablet PC

.....
.....
.....

Smart Phone

.....
.....
.....

F. Application based questions:

1. Ahmad needs to withdraw money from ATM card. Which machine he used for this?
2. Your mother wants to maintain monthly home expenses. Which device he used for this?

PMP

A. Choose the appropriate options:

1. Computer devices are mainly divided into groups.
 - a. Two
 - b. Three
 - c. Four
2. The data and instructions that we enter into the computer are called.
 - a. Output
 - b. Input
 - c. Storage
3. is used to draw pictures and select objects on the monitor.
 - a. Mouse
 - b. Keyboard
 - c. Microphone
4. is an input device which is used to scan the images.
 - a. Printer
 - b. Monitor
 - c. scanner

B. Fill in the blanks:

1. is used to record the voice.
2. is a portable data storage device.
3. DVD stands
4. is the main storage device in a computer.

C. Write T for the true statement and F for the false one:

1. CD-ROM stands for Compact Disc-Read Only Memory.
2. Microphone is an input device which is used to play games on the computer.
3. Information displayed on the monitor is also known as hard copy.
4. DVD is similar to a CD in shape

D. Answer the following questions:

1. What is a smartboard?
2. What are Output devices?
3. What are storage devices?

E. Differentiate Between:

1. CD-ROM

DVD

.....
.....
.....

.....
.....
.....

2. Joystick

Microphone

.....
.....
.....

.....
.....
.....

F. Application based questions:

1. Ali wants to store large amount of data. Tell him which storage device he used for this.
2. Which device you use to convert hardcopy to softcopy.

PMP

A. Choose the appropriate options:

- can remember many things and never forgets them.

a. Man	<input type="checkbox"/>	b. Computer	<input type="checkbox"/>	c. None of these	<input type="checkbox"/>
--------	--------------------------	-------------	--------------------------	------------------	--------------------------
- Computer only works according to the instructions given by.

a. Humans	<input type="checkbox"/>	b. Animals	<input type="checkbox"/>	c. both a & b	<input type="checkbox"/>
-----------	--------------------------	------------	--------------------------	---------------	--------------------------
- Without man, computer is a..... machine.

a. Dumb	<input type="checkbox"/>	b. Deaf	<input type="checkbox"/>	c. Blind	<input type="checkbox"/>
---------	--------------------------	---------	--------------------------	----------	--------------------------

B. Fill in the blanks:

- has made life very fast and easy.
- doesn't need electricity to work.
- Computer doesn't have
- A computer cannot and take on its own.

C. Write T for the true statement and F for the false one:

- A computer can do the same task again and again.
- A computer makes mistakes by itself.
- Computer gets tired after some time.
- Man can take decisions on his own.

D. Answer the following questions:

- How does a computer works?
- Who needs electricity to work?

E. Application based questions:

- How can you prove that computer is a dumb machine?
- How can you say that computer is faster than a man?

A. Choose the appropriate options:

1. Tux Paint was created by Bill Kendrick in the year:

a. 2001

b. 2002

c. 2003

2. We can disable or enable the sound effect by pressing keys.

a. ALT+S

b. ALT+C

c. ALT+D

3. Just below the selector, there arebuttons.

a. Two

b. Three

c. Four

4. You can click..... button to exit the slide show and return to the slide show image selection screen.

a. Exit

b. Back

c. Close

B. Fill in the blanks:

1. Paint tool is used to make..... drawings.

2. Magic tool is used to add..... effects in the drawing.

3. Slide show helps to run all the of a story or text, one after another.

4. Type tool is used to type and in the drawing.

C. Write T for the true statement and F for the false one:

1. Stamp is used to paste pre-drawn or photographic images.

2. We cannot change the size of a stamp.

3. Tux paint is a free drawing program for windows.

4. Clicking on [x] button will create a new file.

D. Answer the following questions:

1. What is the use of Tux paint?

2. How can you open a new drawing?

E. Differentiate Between:

1. Line Tool

.....
.....
.....

Fill Tool

.....
.....
.....

2. Next button

.....
.....
.....

Back button

.....
.....
.....

F. Application based questions:

1. Zara wants to make a Family tree. Which program she used for this?
2. Sami wants to change the size of the stamp. Which tool she used for this?

PMP

A. Choose the appropriate options:

1. Writer can also be used to make your document look more.
 - a. Beautiful
 - b. attractive
 - c. both a & b
2. Libre Office writer is a program.
 - a. Word Processing
 - b. Paint Processing
 - c. both a & b
3. An empty document titled appears on your screen.
 - a. Untitled
 - b. Untitled 1
 - c. Untitled 2
4. You need to press the key only when you want to start a new paragraph.
 - a. New
 - b. Shift
 - c. Enter

B. Fill in the blanks:

1. Selected text appears on your screen.
2. The keyboard shortcut to underline the selected text is.....
3. The file extension for write file is
4. To make change in your text in writer, you must the text first.

C. Write T for the true statement and F for the false one:

1. We can select a paragraph by double-click on a word.
2. We cannot make a long selection in Writer.
3. We cannot change the color of text in Writer.
4. There is only one font type in Writer.

D. Answer the following questions:

1. How can you change the font size of the text?
2. How can you select the Word, sentence and a paragraph in Writer?
3. What is the use of Enter key in a Writer?

E. Differentiate Between:

1. Title Bar

Menu Bar

.....
.....
.....

.....
.....
.....

2. Scroll Bar

Status Bar

.....
.....
.....

.....
.....
.....

F. Application based questions:

1. Amir writes a poem and he wants to use different font. Where he finds font options.
2. Your sister needs to highlight the important points in a paragraph. Which options she used to do it.

PMP

Ch-6

Arrangement of Patterns

A. Choose the appropriate options:

- Patterns are regular arrangements of.
a. Lines b. Shapes c. Colors d. All of these
- is an important life skill needed to take on larger tasks.
a. Composition b. Decomposition c. Patterns d. None of these
- Understanding the patterns helps solve the instructions more.....
a. Quickly b. Efficiently c. both a & b d. None of these

B. Fill in the blanks:

- helps you to learn how the information is secured.
- Coding-decoding explains the work flow of the process.
- is breaking down of a problem into smaller parts.

C. Write T for the true statement and F for the false one:

- We cannot convert the information back to its original form.
- Patterns are irregular arrangements of lines, shapes and colors.
- Decomposition makes our work more hectic.

D. Answer the following questions:

- What is decomposition?
- What are patterns?

E. Differentiate between:

1.	Coding	Decoding

2. Growing Pattern

.....
.....
.....

Repeating Pattern

.....
.....
.....

F. Application based questions:

1. You need to clean your school bag. How can you decompose this problem?

PMP

A. Choose the appropriate options:

1. KTurtle is a software program that is based on.

- a. LOGO b. LUDO c. None of these

2. The commands that move the turtle are called..... commands.

- a. Forward b. backward c. moving

3. KTurtle editor uses case letters for the commands.

- a. Lower b. Upper c. both a & b

4. The syntax of RESET command is.....

- a. Reset b. reset c. both are correct

B. Fill in the blanks:

1. We can download and install KTurtle from software.

2. The language KTurtle is named after

3. Before using KTurtle, we must its screen.

4. After each Command, press key from the keyboard.

C. Write T for the true statement and F for the false one:

1. We cannot clean the drawing from the canvas.

2. Menu bar displays the menu names.

3. Canvas is the playground of turtle where it moves, and draw lines and figures.

4. You can exit KTurtle after finishing your work.

D. Answer the following questions:

1. How can you start the KTurtle program?

2. What is a Editor in KTurtle?

3. How can you Quit KTurtle program?

4. What is the use of Run command?

E. Differentiate Between:

1. Console

.....
.....
.....

Canvas

.....
.....
.....

2. Menu Bar

.....
.....
.....

Tool Bar

.....
.....
.....

F. Application based questions:

1. Make a Rectangle by using KTurtle commands.
2. You need to do practice on KTurtle but KTurtle is not available on your computer. So which software you use to download and install KTurtle.

PMP

A. Choose the appropriate options:

1. Which movie is based on AI

a. Terminator b. Terminal c. None of these

2. A normal music system plays music through a

a. CD b. DVD c. Both A & B

3. AI has made our life.

a. Easier b. difficult c. busy

4. are the most famous AI personal assistants.

a. Siri b. Alexa c. Both A & B **B. Fill in the blanks:**

1. and are the most famous AI personal assistants.

2. There are ways to work in Petalica Paint.

3. Petalica is a free online based program.

4. A normal machine is fed with.....

C. Write T for the true statement and F for the false one:1. AI-enabled machines are same as normal machines. 2. A normal music system plays music With Alexa. 3. Tux paint is the free online AI-based coloring program. 4. Canna is the coloring style uses in Petalica Paint. **D. Answer the following questions:**

1. What are the two ways to work in Petalica Paint?

2. What is an Intelligent decision?

3. Write the steps to start Petalica Paint program.

E. Differentiate Between:

1. Normal Machines

AI Enabled Machines

.....
.....
.....

.....
.....
.....

2. Normal Music System

Smart Music System

.....
.....
.....

.....
.....
.....

F. Application based questions:

1. Which software you suggest to Sara to transform his sketch into image.
2. Raman wants to listen to music but he doesn't have Smart Music System. What he used now instead of Smart Music System.

PMP

From Lesson No 1 to 4

A. Choose the appropriate options:

- are preparing question Papers on computer.
a. Teachers b. Doctors c. Engineers
- Just below the selector, there are buttons.
a. Two b. Three c. Four
- is an input device which is used to scan the images.
a. Printer b. Monitor c. scanner
- Computer only works according to the instructions given by.
a. Humans b. Animals c. Both A & B

B. Fill in the blanks:

- Laptop can work on..... as well as main power supply.
- is the main storage device in a computer.
- Computer doesn't have
- Paint tool is used to make..... drawings.

C. Write T for the true statement and F for the false one:

- The size of a Smartphone is smaller than a Tablet PC.
- Microphone is an input device which is used to play games on the computer.
- Computer gets tired after some time.
- We cannot change the size of a stamp.

D. Answer the following questions:

- What is the use of computers at home?
- What is a Hard disk?
- What is the Use of Stamp Tool?
- Who created Tux Paint and in which year?.

From Lesson No 5 to 8

A. Choose the appropriate options:

- You need to press the key only when you want to start a new paragraph.
a. New b. Shift c. Enter d. Alt
- Patterns are regular arrangements of.
a. Lines b. Shapes c. Colors d. All of these
- The syntax of CLEAR command is.....
a. Clear b. clear c. Clear d. None of these
- AI has made our life.
a. Easier b. difficult c. busy

B. Fill in the blanks:

- You can rotate the turtle from todegrees.
- The goal of AI is to make computers takedecisions.
- Decomposition meansdown the problem.
- We can write letters by using writer.

C. Write T for the true statement and F for the false one:

- Scroll bar is used to move the display up, down, right and left.
- Decomposition is not an important life skill.
- Run command and F5 key works same in Kturtle.
- AI stands for Artificial Intelligence.

D. Answer the following questions:

- How AI based machines is better than normal machines?
- How can you move the turtle 50 steps backward?
- How can you Code your name?
- What is the purpose of Keyboard in Writer?